



PCTV MediaCenter 300i

Turn your PC into an entertainment center with remote.

Key features

- Future ready! Offers reception of analog TV via antenna, analog cable TV and digital TV via antenna (DVB-T) all in one product.
- Best set of TV viewing features for turning your PC into a personal video recorder (PVR): Time shifting, EPG, Teletext, optimized channel scan and channel name recognition.
- Integrated CD/DVD burning of recorded TV shows, music and videos.
- Audio CD ripping creates MP3 files that are added directly to media database.
- Internet radio support
- DVD and CD playback.

25/50/100 word descriptions

25 words

Pinnacle MediaCenter 300i turns any PC into a DVB-T-ready, all-in-one entertainment centre, thanks to its analogue/digital internal TV tuner card, easy-to-use software and remote control.

50 words

Pinnacle MediaCenter 300i turns any PC into a DVB-T-ready, all-in-one entertainment centre, thanks to its analogue/digital internal TV tuner card, easy-to-use software and remote control. Manage all your media files and enjoy remote control access all kinds of digital entertainment: analogue and digital TV, Personal Video Recording (PVR), internet radio, movies, picture, music and video.

100 words

Pinnacle MediaCenter 300i turns any PC into a DVB-T-ready, all-in-one entertainment centre, thanks to its analogue/digital internal TV tuner card, easy-to-use software and remote control. It is compatible with today's and tomorrow's TV broadcast standards (analogue and DVB-T) and provides advanced personal video recording (PVR) features like pause, rewind and instant replay live TV. MediaCenter also includes one-button or programmable TV and radio recording. In addition, you can play DVDs and CDs, listen to digital music and internet radio stations (including your favourite playlists), use your PC as a music jukebox, share photo slideshows with friends and watch home movies or Internet films.

Key Messages

DVB-T and Analog combo

Pinnacle PCTV MediaCenter 300i supports both analog and DVB-T reception. Use this TV tuner board now for analog stereo TV. By the time DVB-T is available in your region, you just switch to digital in Pinnacle MediaCenter. You will enjoy numerous free Digital TV programs in perfect picture and stereo sound quality.

Complete hardware and software solution

Because Pinnacle PCTV MediaCenter solutions include software that has been designed and tested for the included hardware, they offer a perfectly tuned, compatible product combo for the most enjoyable experience possible.

Amazing new entertainment experience!

Pinnacle PCTV MediaCenter turns an ordinary PC into a digital entertainment system - which means that you can access all your music, photos, and videos comfortably using a remote control. It's like having a music jukebox, DVD player, PVR, photo slideshow projector all built into your PC. Or connect your graphic and sound card to your TV or stereo.

Simple, complete media management solution

The Pinnacle PCTV MediaCenter also includes a sophisticated media management application, Pinnacle MediaManager that equally supports music, photos, and video files, and integrates features like CD ripping, CD burning, watched folders to provide a complete solution.

Turn your PC into a PVR.

Pinnacle PCTV MediaCenter products include all of the great TV programming and time shifting functions that Pinnacle PCTV products are known for. Use Time Shifting technology to fast forward past commercials, pause the show you're watching and resume viewing where you left off.

Target Market

A typical Pinnacle PCTV MediaCenter user will have a lot of digital photos and MP3s or a lot of movies downloaded from the Internet or captured from his camcorder. He is looking for the ideal, easy way to enjoy his content without sitting down in front of his keyboard.

Pinnacle PCTV MediaCenter is targeted at tech savvy people who own a PC and who wish to have the advantages of "Media Center" functions, but prefer transforming their current PC instead of replacing it with a new Microsoft Media Center Edition PC.

Pinnacle PCTV MediaCenter range is aimed at people who wish to watch TV on their PCs, record TV programs to their hard drive and organise their media files.

PRODUCT HIGHLIGHTS

Product includes:

- Pinnacle MediaCenter software application
- Pinnacle MediaManager software application
- Integrated Online user manual in PDF format on CD
- Printed quick hardware installation guide (poster)
- Remote control kit including
 - IR remote transmitter incl. batteries (transmitter varies depending on bundled TV tuner HW)
 - IR receiver connected to PCI board via cable with 2.5 mm



Order Information

**PCTV PMC 300i PCI
PAL/DVB-T RETAIL D/GB**
202262013 613570214557

Box Size and Weight

300 x 080 x 220 mm
0.525 kg

Hardware:

PCTV MediaCenter 300i is equipped with a multi-purpose IC tuner, which allows the reception of analog terrestrial and cable TV in stereo as well as DVB-T content - exclusively, not simultaneously.

The hardware has the following approvals:

- FCC and CE
- Microsoft WHQL certification for Windows XP

Stereo audio support	NICAM, CCIR Dual-FM carrier
Video inputs	S-video (Hosiden connector) Composite video (RCA connector)
Audio output	Internal 4 pin header 2.8mm (to sound board; only required for analog TV)
Infra red remote input	2.5mm phone plug for optional remote receiver cable

Supported file formats

Video playback: MPEG 1/2/4, DivX, Xvid, WMV9, ASF, DV-AVI

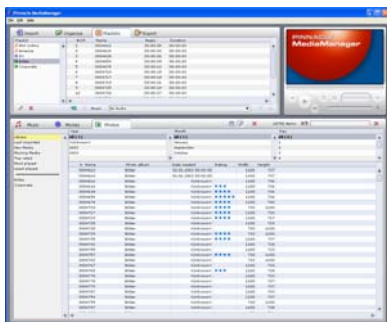
Music Playback: MP3, WMA, WAV

Image playback: JPG, GIF, BMP

TV recording: capture analog TV to hard disc with MPEG1/2 RT compression with 6 quality level presets for VCD, SVCD, DVD-long play, MPEG2 full D1, MPEG2 long-play (2/3D1, 1.5Mbit/s, compatible for ShowCenter WiFi streaming), capture Digital TV in original format.

CD and DVD playback: DVD, SVCD, VCD, VR +, VR -

Burning: Audio CDs, MP3 CD and DVD, VCD, S-VCD and DVD support



System requirements

Operating system:

- Windows XP professional SP1 (or higher) or
- Windows XP home SP1 (or higher)

Minimum system requirements

- Pentium III 1.0GHz or equivalent AMD Athlon CPU/256 MB RAM
- IDE hard disk with master mode drivers (with 5GB free space)
- Graphics board with support for DirectX8 or higher
- Sound board with support for DirectX9 or higher
- CD-ROM or DVD-ROM drive
- Mouse
- one PCI 2.3 compatible slot

Recommended system requirements

- PC with Pentium IV 2GHz or Athlon XP 2200+
- 512MB of RAM
- U-DMA hard disk with 20 GB or more disk space
- DirectX 9 -or higher- compatible graphics and sound controller
- CD- or DVD-Recorder
- Mouse
- One PCI 2.3 compatible slot

